

Genetics Of Sepsis & Septic shock



ECORN GenOSept

This ground-breaking project, benefiting from EU support, will link European intensive care clinicians with laboratory scientists to improve our understanding of how genetics affects our patients' outcomes from severe sepsis and septic shock.

YOU CAN CONTRIBUTE TO THIS SEMINAL PROJECT IN SEVERAL WAYS

- ◆ Become a GenOSept national coordinator for your country
- ◆ Become a GenOSept lead clinician for your ICU
- ◆ Bring genetics expertise to the project as a scientist
- ◆ Become a GenOSept sponsor



Working to promote the highest standards of multidisciplinary care of critically ill patients and their families through education, research and professional development.

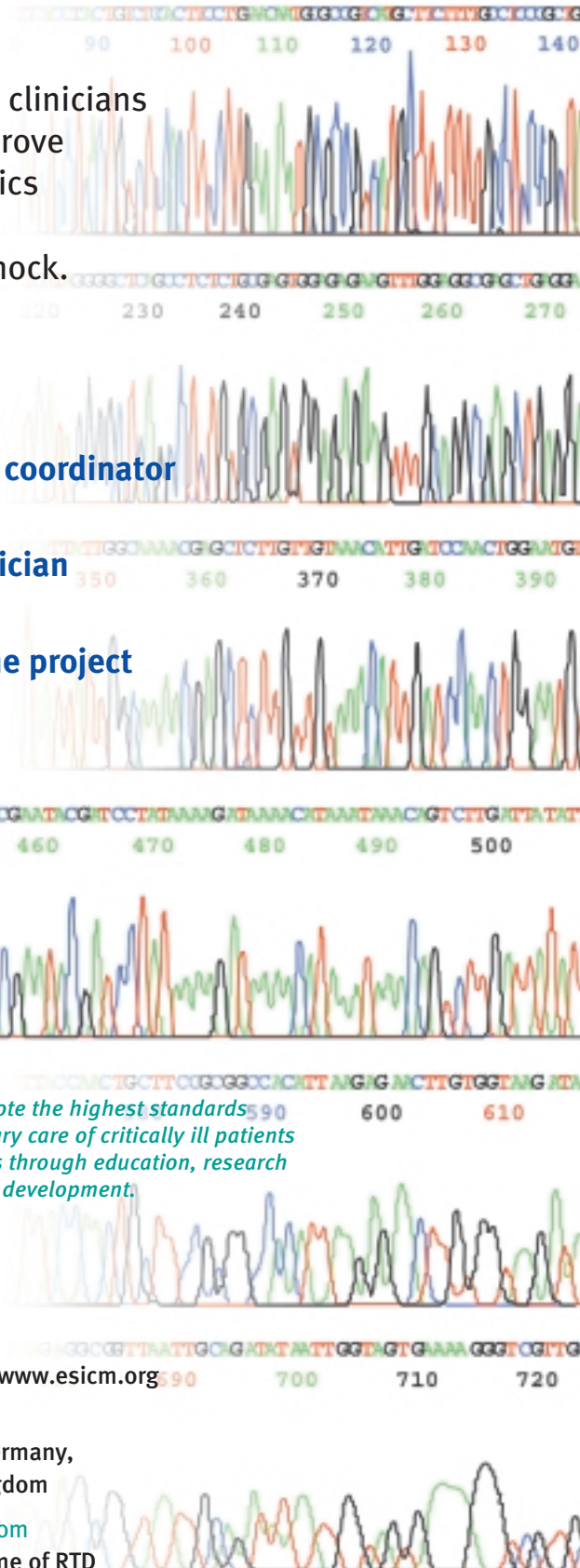
◆ Contact

European Society of Intensive Care Medicine
40 avenue Joseph Wybran / B-1070 Brussels
Tel +32 2 559 03 50 / Fax +32 2 527 00 62
e-mail public@esicm.org / website <http://www.esicm.org>

◆ GenOSept Partners are from

Belgium, Czech Republic, Estonia, France, Germany, Hungary, Israel, Italy, Spain, and United Kingdom

◆ This project will be supported by a grant from the European Union 6th Framework Programme of RTD



MORE ABOUT



GenOSept

Genetics Of Sepsis & Septic shock

GENOSEPT IS THE FIRST EUROPEAN-WIDE EPIDEMIOLOGIC STUDY OF GENETIC FACTORS affecting outcome in critically ill patients with sepsis and septic shock. With the assistance of a grant from the European Union 6th Framework Programme of RTD, the European Society of Intensive Care Medicine (ESICM) is leading an international consortium of clinicians, geneticists and epidemiologists to investigate determinants of mortality and response to treatment.

The three-year study will create an unique database for sepsis in Europe, and is likely to have a major impact on diagnosis and treatment of septic patients in subsequent therapeutic trials by targeting at-risk subpopulations.

We would like you to join this exciting new enterprise which links bedside clinicians with new laboratory techniques in genetic epidemiology, biometrics and high throughput genotyping.

WHAT DOES THE PROJECT INVOLVE? The project is divided into several work packages over three years. These include developing consensus definitions, examining ethical issues in genetic testing, developing laboratory technologies and harmonising gene testing between countries, and evaluating epidemiological and statistical techniques in the complex field. Central to the entire project is the clinical study during which we wish to obtain clinical data and a blood sample from patients with pneumonia, peritonitis, pancreatitis or bacterial meningitis.

SEVERAL WAYS TO JOIN IN Please contact our challenging team via public@ESICM.org and tell us how you would like to participate.

◆ Consortium Partners

ESICM (Brussels, Belgium),
University of Bonn (Germany),
INSERM-Cochin Institute (Paris, France),
Oxford University - Wellcome Trust Centre for Human Genetics (UK),
University of Turin (Italy),
University Rovira & Virgili (Tarragona, Spain),
GSF-National Research Centre for Environment and Health (Neuherberg, Germany),
Hadassah Medical Organisation (Jerusalem, Israel),
SIRS-Lab GmbH (Jena, Germany),
University of Ulm (Germany),
University of Jena (Germany),
Masaryk University (Brno, Czech Republic),
National Medical Centre (Budapest, Hungary)
and Tartu University Clinics (Estonia).

◆ Steering Committee

Frank Stüber (Chair), Julian Bion, Jean-Daniel Chiche, Chris Garrard, Tibor Gondos, Adrian Hill, Charles Hinds, Paul Holloway, Thomas Meitinger, Julian Millo, Jean-Paul Mira, Marco Ranieri, Konrad Reinhart, Jordi Rello, Stefan Russwurm, Silver Sarapuon, Marion Schneider, Vladimir Sramek, Yoram Weiss, and Thomas Wienker.

◆ Advisory Board

Derek Angus, Pittsburgh University (Pittsburgh, USA)
Timothy Buchman, Washington University (St Louis, USA)
Benoit Vallet, Lille University (Lille, France)



Working to promote the highest standards of multidisciplinary care of critically ill patients and their families through education, research and professional development.